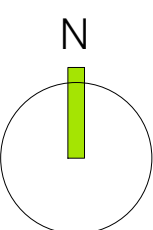
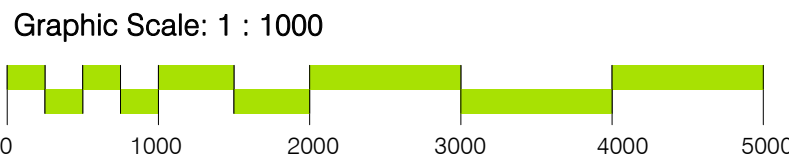


- LEGEND**
- 1 EXISTING SPORTS CENTRE
 - 2 PROPOSED NEW AQUATIC AREAS
 - 3 PROPOSED NEW SERVICE AREAS
 - 4 PROPOSED NEW AQUATIC AMENITIES
 - 5 EXISTING UNUSED SHIRE OFFICES
 - 6 EXISTING CAR PARKING
 - 7 PROPOSED DEVELOPMENT SITE





LEGEND

stage 1 - Aquatic Facilities

- 1** 8 LANE 50M POOL including DDA compliant ramp and entry stairs
- 2** PROGRAMME AND LEISURE POOL including walk lanes, Learn to Swim, Turbo Channel, Zero beach entry
- 3** TOTS POOL
- 4** RENOVATED CHANGE ROOM AND TOILET AREA to include
 - Aquatic Male and Female Change Facilities
 - Dry sports Male and Female Change Facilities
 - Aquatic Family / Universal Access Change Facility
 - Dry sports Family / Universal Access Change Facility
- 5** MULTI-PURPOSE ROOM
 - Club Room
 - Training Room
 - Function Room
 - Meeting Room
- 6** COVERED OUTDOOR BBQ KITCHEN AREA
- 7** POOL STORE
- 8** POOL PLANT ROOM with outdoor service courtyard and new back of house service entry to the existing stage.
- 9** SCHOOL ENTRY
- 10** EXISTING 25M POOL to be demolished post completion of the new pools

General aquatic notes

- Extend site to the north over Agate Lane.
- All water bodies to have retractable shade sails.
- Existing 25m pool to stay in operation until the completion of stage 1.

stage 2 - Zero depth water 'SplashPad'

- 12** ZERO DEPTH WATER 'SPLASHPAD'
 - shade sails
 - 1.2m control fence to Aquatic centre
 - 2.1m high fence with sliding gate to allow public access from main entry
 - plant room building to side of existing council building
- 13** BBQ HUTS

stage 3 - Sport Centre Facilities

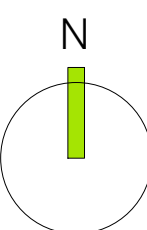
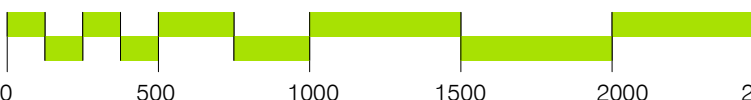
- 14** RE-CONFIGURED ENTRY AND RECEPTION
 - New entry doors facing the carpark, new entry foyer area with combination reception/control bench with kiosk servery.
- 15** OFFICE AND ADMINISTRATION AREA
 - New administration area, Managers Office, Staff Break-out/meeting room and First Aid.
- 16** GYMNASIUM
 - Gymnasium to move south and remains the same size as the existing.
- 17** FAMILY / UNIVERSAL ACCESS CHANGE
 - New Unisex Family / Universal Access change facilities.
- 18** CONSOLIDATED USER GROUP STORAGE
 - Large consolidated storage area with separate user group storage areas.

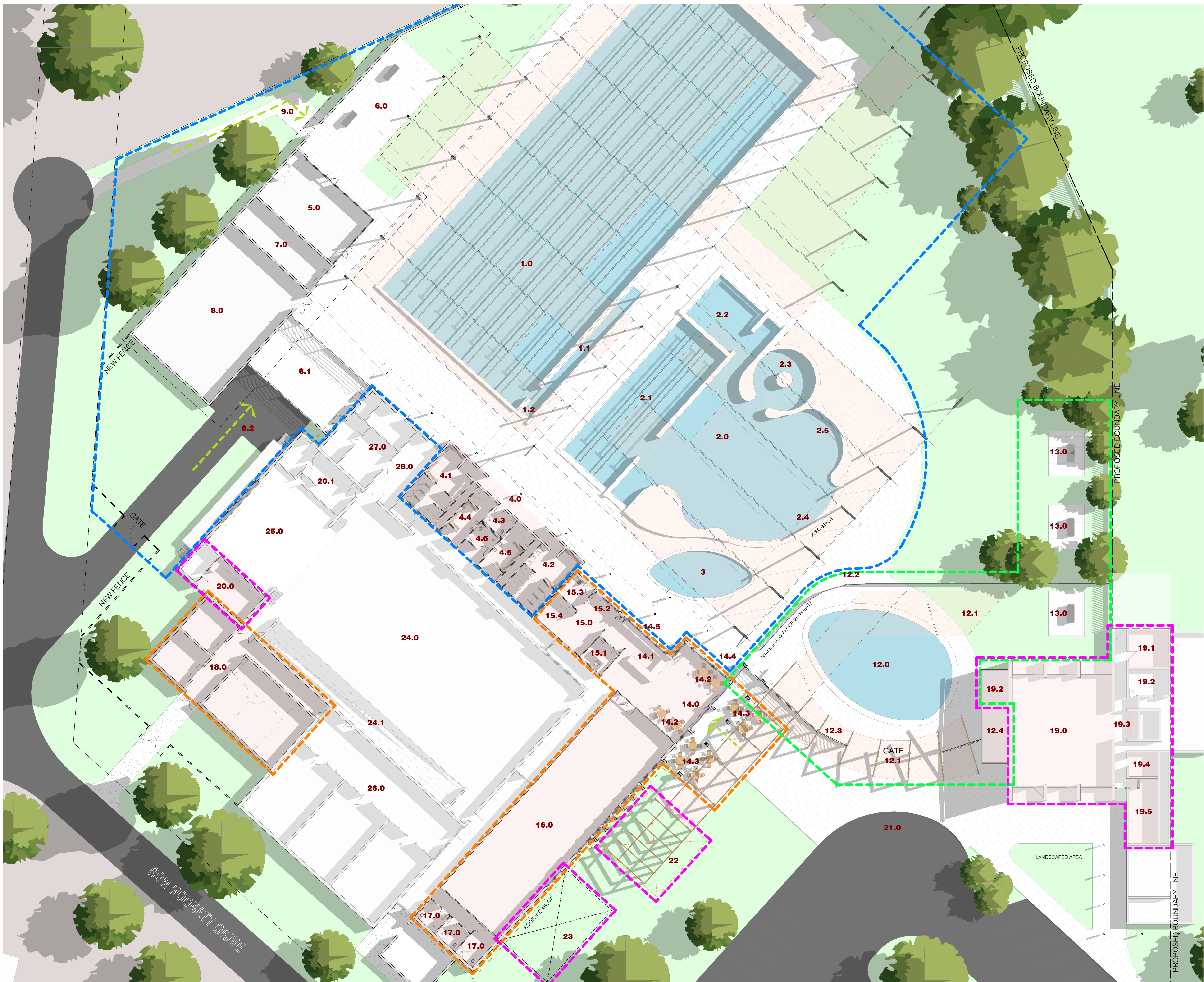
stage 4 - Additional Facilities

- 19** NEW COMMUNITY HALL
 - Re-configure existing council administration area into a multi-purpose community hall with male, female, universal access toilets and tea prep facilities.
- 20** EMERGENCY EVACUATION CENTRE KITCHEN
 - Re-configure one of the underutilized off-stage change facilities into a commercial kitchen facility suitable for a emergency evacuation centre. Update and convert the second off-stage change room into a unisex change facility.
- 21** FULLY SHADED PLAYGROUND
- 22** GYMNASIUM EXTENSION
 - Additional 70m2 of gymnasium floor space.
- 23** NEW STREET SIGNAGE AND ENTRY PAVING
 - Create a street presents with way finiding signage and Entry Path.

- REFURBISHED AREAS
- EXISTING POOL STRUCTURES

Graphic Scale: 1 : 500





LEGEND

stage 1 - Aquatic Facilities

- 1.0 8 LANE 50M POOL
- 1.1 DDA Compliant Ramp
- 1.2 Entry Stairs
- 2.0 PROGRAMME AND LEISURE POOL
- 2.1 WALK LANES
- 2.2 LEARN TO SWIM
- 2.3 TURBO CHANNEL
- 2.4 ZERO BEACH ENTRY
- 2.5 RELAXATION GROTTO
- 3.0 TOTS POOL
- 4.0 RENOVATED CHANGE ROOM AND TOILET AREA
- 4.1 AQUATIC MALE CHANGE
- 4.2 AQUATIC FEMALE CHANGE
- 4.3 AQUATIC FAMILY / UNIVERSAL ACCESS CHANGE
- 4.4 DRY SPORTS FEMALE CHANGE
- 4.5 DRY SPORTS MALE CHANGE
- 4.6 DRY SPORTS FAMILY / UNIVERSAL ACCESS
- 5.0 MULTI-PURPOSE ROOM
 - Club Room
 - Training Room
 - Function Room
 - Meeting Room
- 6.0 COVERED OUTDOOR BBQ KITCHEN AREA
- 7.0 POOL STORE
- 8.0 POOL PLANT ROOM
- 8.1 OUTDOOR SERVICE COURTYARD
- 8.2 BACK OF HOUSE SERVICE ENTRY
- 9.0 SCHOOL ENTRY

stage 2 - Zero depth water 'SplashPad'

- 12.0 ZERO DEPTH WATER 'SPLASHPAD'
- 12.1 SHADE SAILS
- 12.2 1.2M CONTROL FENCE TO AQUATIC CENTRE
- 12.3 2.1M HIGH FENCE WITH SLIDING GATE
- 12.4 PLANT ROOM BUILDING
- 13.0 BBQ HUTS
- 21.0 MODIFICATION TO EXISTING CAR PARK AT FRONT ENTRY

stage 3 - Sport Centre Facilities

- 14.0 ENTRY FOYER
- 14.1 RECEPTION / KIOSK SERVERY
- 14.2 INDOOR LOUNGE
- 14.3 OUTDOOR LOUNGE
- 14.4 AQUATIC LOUNGE
- 14.5 AQUATIC SERVERY
- 15.0 ADMINISTRATION
- 15.1 MANAGERS OFFICE
- 15.2 LIFEGUARD STATION
- 15.3 FIRST AID
- 15.4 STAFF BREAKOUT/MEETING ROOM
- 16.0 GYMNASIUM
- 17.0 FAMILY / UNIVERSAL ACCESS CHANGE
- 18.0 CONSOLIDATED USER GROUP STORAGE

stage 4 - Additional Facilities

- 19.0 NEW COMMUNITY HALL
- 19.1 MALE TOILET
- 19.2 STORE
- 19.3 TEA PREP
- 19.4 UNIVERSAL ACCESS TOILET
- 19.5 FEMALE TOILET
- 20.0 EMERGENCY EVACUATION CENTRE KITCHEN
- 20.1 UNISEX OFF-STAGE CHANGE ROOM
- 22.0 FULLY SHADED PLAYGROUND
- 23.0 GYMNASIUM EXTENSION

Existing Facilities

- 24.0 EXISTING SPORTS COURT
- 24.1 EXISTING SPECTATOR SEATING
- 25.0 EXISTING STAGE
- 26.0 EXISTING SQUASH COURTS
- 27.0 EXISTING PLANT ROOMS
- 28.0 EXISTING STORAGE AREA

Graphic Scale: 1 : 200



N

