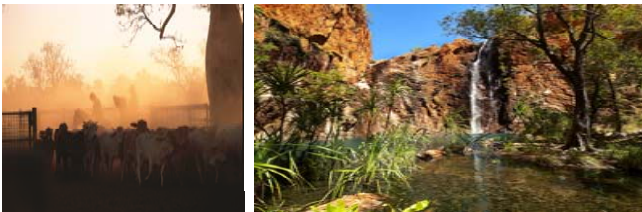




## Your Rates Explained



2017 | 2018

### Pensioner/ Seniors

If you hold a current Pension Concession Card (not a Health Care Card) or a Veteran Affairs Gold Card, which stipulates TPI or War Widow, you may claim a rebate on your sole or principal place of residence. New applications can be made by phoning the Water Corporation on 1300 659 951.

If you remain eligible and received the rebate last year you do not need to reapply, the rebate amount will be shown on your Rates Notice.

### Can I obtain a copy of my rates notice?

Rates notices are posted, replacement copies are available at a cost of \$24.00 per notice.

Please contact the Shire's Rates Officer to request a copy of your rates notice.

**Rate payments MUST be received by the Shire of Wyndham East Kimberley by the due date.**

**Please consider this when choosing your method of payment and the length of time for the payment to be received by the Shire.**

### Payment Options

#### In Person

Present your rates notice intact to either the Kununurra or Wyndham Administration offices using cash, cheque, or EFTPOS

#### Pay By Phone - Credit card

Contact the Shire on 08 9168 4100 to pay your rates using your VISA or MASTERCARD

#### Internet Banking - BPAY

Contact your financial institution to make this payment from your account, quoting Biller Code 102376 and the reference number on your rates notice

#### Pay by Mail

Detach the lower portion of your rates notice and complete the credit card authority or make your cheque payable to the Shire of Wyndham East Kimberley.



### Change of postal address or property ownership

Ratepayers are legally required to advise the Shire of any changes in ownership and mailing addresses.

You must notify the Shire in writing if you:

- ◇ Have changed your mailing address and/or residential address.
- ◇ Have changed your name (copy of driver's license or relevant certificate required).
- ◇ Wish to nominate an agent to receive your rates notice.
- ◇ Wish to nominate your tenant as the ratepayer (ie. as the recipient of the rates notice).

A change of Name & Address Form is available from the Shire Website. This form must be completed and signed by the property owner.

Delays in mail or payments due to an incorrect address are not considered to be an acceptable excuse for late payment of rates.

### Contact Information

#### Shire of Wyndham East Kimberley

#### Kununurra Administration Office

20 Coolibah Drive  
PO Box 614  
Kununurra WA 6743  
Ph. 9168 4100 Fax: 9168 1798

Opening Hours: Monday to Friday  
8:00am to 4:00pm

#### Wyndham Administration Office

Koolama Street  
Wyndham WA 6740  
Ph. 9161 1200 Fax: 9161 1295

Opening Hours: Monday to Friday  
8:00am to 12:00pm, 1:00pm to 4:00pm

Email: [mail@swek.wa.gov.au](mailto:mail@swek.wa.gov.au)  
Website: [www.swek.wa.gov.au](http://www.swek.wa.gov.au)

Credit Photos Tourism WA

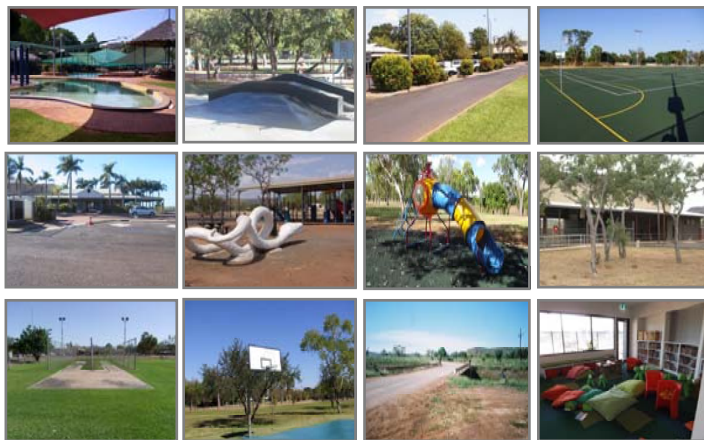


## Why do I pay rates?

Local Government rates are levied annually to all rateable properties and your rates fund the facilities and services used by community members and visitors.

Rates are a simple and effective way of paying for the development and improvement of vital community facilities such as libraries, sporting grounds, recreation centres, community buildings, parks, gardens, play equipment, roads, footpaths and signage.

Services include health, building & planning, ranger operations, land care, administration and governance.

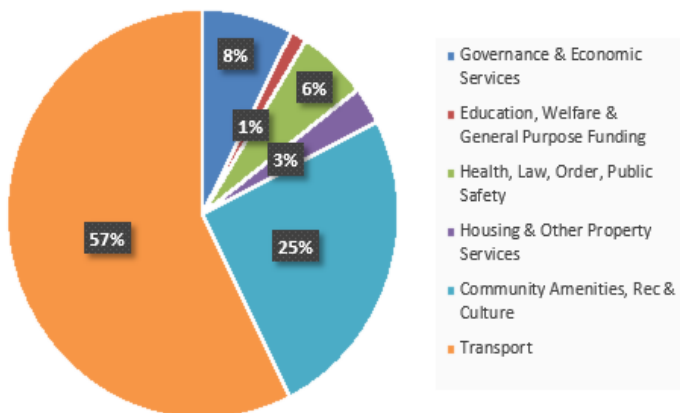


## What services do my rates pay for?

The Shire has approximately \$283 million of net assets to administer on behalf of the community.

For the 2017/18 year the Shire has budgeted \$46 million for operating and capital expenses of which \$10 million is raised from rate income.

To meet our growing community's service and infrastructure, your rates are distributed in the following areas.



## Differential & Minimum Rating

The Shire applies differential rating categories which are determined by land use, zoning or a combination of these to best reflect the rate in the dollar contribution from the different property groups.

Minimum payments are applicable where the rates calculation provides a figure lower than the minimum.

This system ensures owners of all types of properties make a proportionate contribution.

GROSS RENTAL VALUE	ADVERTISED		ADOPTED	
	Rate in the Dollar	Minimum Payment	Rate in the Dollar	Minimum Payment
Residential	0.0953	\$1112.00	0.0953	\$1112.00
Other Vacant	0.1430	\$1112.00	0.1430	\$1112.00
Commercial	0.1240	\$1112.00	0.1240	\$1112.00
Industrial	0.1144	\$1112.00	0.1144	\$1112.00

UNIMPROVED VALUE	ADVERTISED		ADOPTED	
	Rate in the Dollar	Minimum Payment	Rate in the Dollar	Minimum Payment
Rural Residential	0.0100	\$1112.00	0.0110	\$1112.00
Pastoral	0.0544	\$1112.00	0.0570	\$1112.00
Commercial/ Industrial	0.0069	\$1112.00	0.0770	\$1112.00
Rural Agriculture 1	0.0097	\$1112.00	0.0116	\$1112.00
Rural Agriculture 2	0.0069	\$1112.00	0.0094	\$1112.00
Mining	0.2821	\$1112.00	0.2821	\$1112.00
Mining Exploration/	0.1411	\$1112.00	0.1411	\$310.00
Other	0.0065	\$1112.00	0.0065	\$1112.00

## Emergency Services Levy (ESL)

This is a levy imposed by the Department of Fire and Emergency Services (DFES) and collected on its behalf by Local Government in WA.

The 2017/18 declared minimum ESL charge is \$75.

For further information please visit the DFES website [www.dfes.wa.gov.au](http://www.dfes.wa.gov.au) and click on the link to Emergency Services Levy. Enquires to free call 1300 136 099.

## Waste Charges & Vouchers

Waste collection, disposal, tip maintenance including a contribution to waste management within the Shire is funded by these charges:

- ◇ Waste Management Charge of \$200.00 per annum.
- ◇ Waste Receptacle Charge of \$307.00 per annum for a once weekly waste collection or \$507.00 per annum for exempt/non-rateable properties.
- ◇ Additional waste collections are charged at \$507.00 per receptacle per service per annum.

Yellow and Red Vouchers are available to the following rating categories:

### GRV Residential, UV Rural Residential, UV Rural Agriculture 1, UV Rural Agriculture 2

Where a waste receptacle service is provided Yellow vouchers entitle the user to dispose of 1 cubic metre (6x4 trailer plus 1 Sulo bin or 4 Sulo bins or 16 domestic bin bags) of domestic waste per annum.

Where a waste receptacle service is not provided Red Vouchers entitle the user to dispose of 52 x 240 Litres (equivalent size to a green rubbish Sulo bin) of domestic waste per annum at a charge of \$153.50.

## Important Dates

Due dates are as follows:

Payment in Full	4 Instalments	2 Instalments	Dates
Single Instalment	1st Instalment	1st Instalment	08/09/2017
	2nd Instalment		10/11/2017
	3rd Instalment	2nd Instalment	12/01/2018
	4th Instalment		16/03/2018

Ratepayers can elect any instalment option offered above by paying the applicable first instalment amount as per the rates notice ON OR BEFORE the first due date.

If the instalment options shown above are not suitable, ratepayers may request a weekly, fortnightly or monthly payment arrangement by emailing [mail@swek.wa.gov.au](mailto:mail@swek.wa.gov.au) at a charge of \$59.70.

Interest is charged on all overdue balances. The penalty interest rate is currently 9% for Rates and 11% for ESL per annum calculated daily (excluding eligible pensioners and seniors).