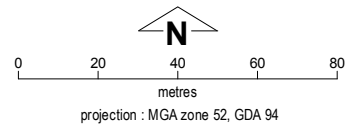


# Wuggubun Layout Plan 1 - Living Area

Draft Version 2



This Layout Plan does not constitute development approval. It is the responsibility of the developer to ensure that all relevant consents, approvals, licences and clearances are in place prior to commencing physical works on the site. Organisations responsible for such matters may include land owner, local government, incorporated community council, native title representative body, native title prescribed body corporate, Aboriginal Cultural Materials Committee, Environmental Protection Authority, state and federal government departments, and other relevant regulatory authorities. Go to the [PlanWA interactive planning map](#) to view Layout Plans with other spatial layers.



Base information and aerial imagery supplied by the Western Australian Land Information Authority SLIP 1096-2018-1. October 2019 aerial image. Extraction date of cadastre 10/01/2020.  
 Settlement layout lots are not derived from calculated dimensions.  
 Map document : Wuggubun LP1 DV2 - Living Area (no anno) BF  
 Produced by Land Use Planning, Department of Planning, Lands & Heritage, on behalf of the Western Australian Planning Commission.  
 © Western Australian Planning Commission 2020

### Land Use (see [Aboriginal Settlements Guideline 1](#))

road reserve	road, essential service distribution network
residential	house, residential quarters
visitor camping	camping ground, traditional law and culture
community	child care premises, civic use, corrective institution, educational establishment, health care centre, worship building
open space	agriculture - extensive, essential service distribution network, traditional law and culture
rural	rural pursuit, agriculture - extensive, animal husbandry - intensive, agriculture - intensive, essential service distribution network
recreation	recreation, essential service distribution network
pedestrian access way	essential service distribution network, pedestrian access way
drinking water source protection area	any use permitted under the Drinking Water Source Protection Plan
waterway	agriculture - extensive, agriculture - intensive, traditional law and culture
commercial	art centre, caravan park, motel, office, service station, shop, tourism accommodation
industrial	fuel depot, industry, motor vehicle repair, storage, vehicle wrecking
public utility	electricity supply, essential service distribution network, drinking water supply, wastewater disposal, telecommunications, rubbish disposal

### Features

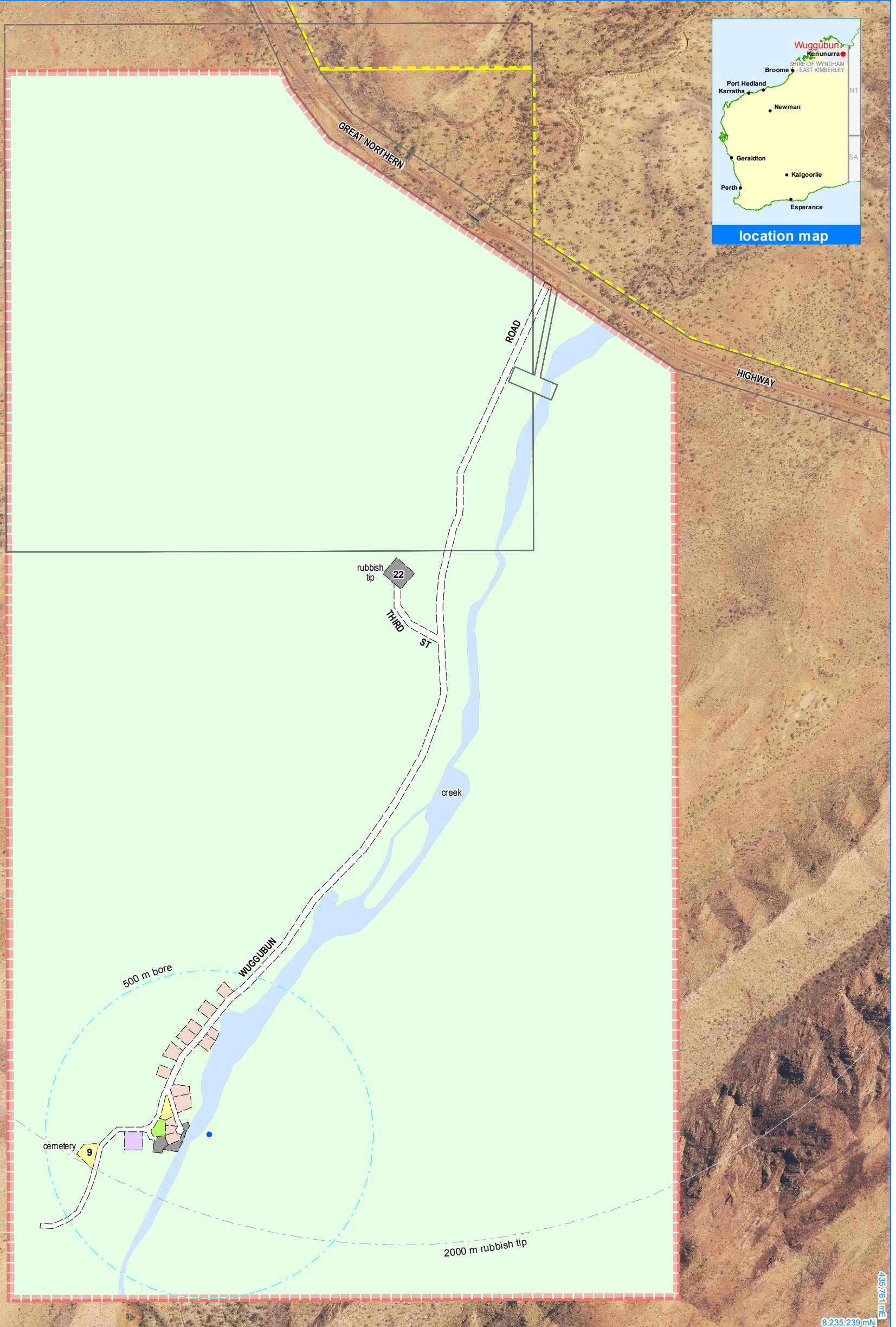
- bore
- cadastre
- lodged cadastre
- private lease
- recommended settlement zone
- settlement zone
- settlement layout (SL) lot & SL-lot number
- 63
- Exclusion Boundary (see [Aboriginal Settlements Guideline 3](#))
  - drinking water source wellhead protection zone
  - industry
  - power station
  - utility

Layout Plan 1 endorsement

Community  
 Local  
 Traditional  
 WAPC  
 Amendment endorsement

**RATIFIED DRAFT**  
 WAPC 17 January 2020

8,239,294 mN  
43,334 mE



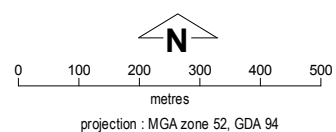
8,235,239 mN  
43,5761 mE

## Wuggubun Layout Plan 1 - Context

Draft Version 2



This Layout Plan does not constitute development approval. It is the responsibility of the developer to ensure that all relevant consents, approvals, licences and clearances are in place prior to commencing physical works on the site. Organisations responsible for such matters may include land owner, local government, incorporated community council, native title representative body, native title prescribed body corporate, Aboriginal Cultural Materials Committee, Environmental Protection Authority, state and federal government departments, and other relevant regulatory authorities. Go to the [PlanWA interactive planning map](#) to view Layout Plans with other spatial layers.



Base information and aerial imagery supplied by the Western Australian Land Information Authority SLIP 1096-2018-1. October 2019 aerial image. Extraction date of cadastre 10/01/2020.  
Settlement layout lots are not derived from calculated dimensions.  
Map document : Wuggubun LP1 DV2 - Context.pdf  
Produced by Land Use Planning, Department of Planning, Lands & Heritage, on behalf of the Western Australian Planning Commission.  
© Western Australian Planning Commission 2020

### Land Use

road reserve	road, essential service distribution network
residential	house, residential quarters
visitor camping	camping ground, traditional law and culture
community	child care premises, civic use, corrective institution, educational establishment, health care centre, worship building
open space	agriculture - extensive, essential service distribution network, traditional law and culture
rural	rural pursuit, agriculture - extensive, animal husbandry - intensive, agriculture - intensive, essential service distribution network
recreation	recreation, essential service distribution network
pedestrian access way	essential service distribution network, pedestrian access way
drinking water source protection area	any use permitted under the Drinking Water Source Protection Plan
waterway	agriculture - extensive, agriculture - intensive, traditional law and culture
commercial	art centre, caravan park, motel, office, service station, shop, tourism accommodation
industrial	fuel depot, industry, motor vehicle repair, storage, vehicle wrecking
public utility	electricity supply, essential service distribution network, drinking water supply, wastewater disposal, telecommunications, rubbish disposal

### Features

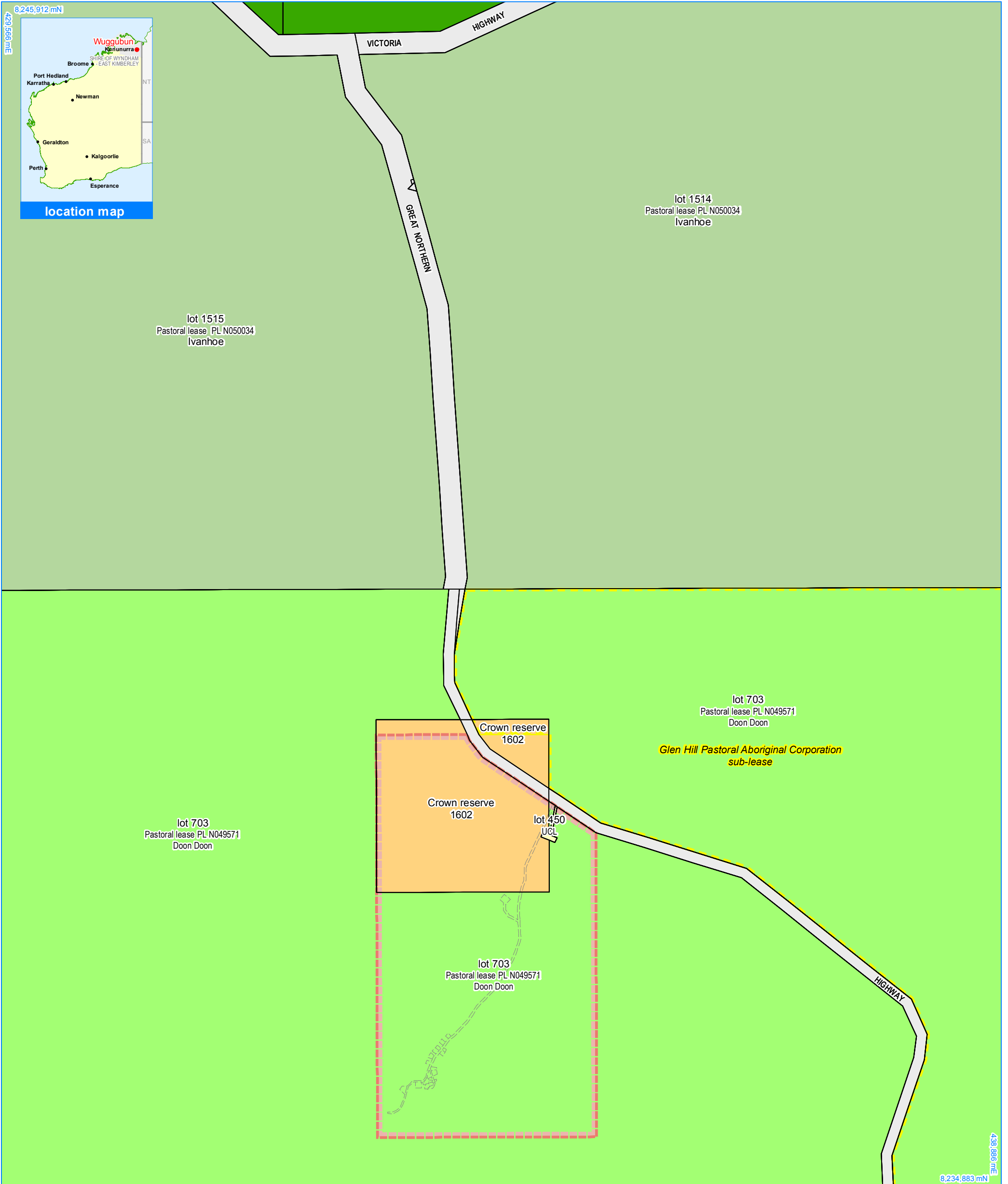
	bore
	cadastre
	lodged cadastre
	private lease
	recommended settlement zone
	settlement zone
	settlement layout (SL) lot & SL-lot number
	63
	Exclusion Boundary
	drinking water source wellhead protection zone
	utility

Layout Plan 1 endorsement

Community  
Local  
Tribal  
WAPC  
Amendment endorsement

**RATIFIED DRAFT**  
WAPC 17 January 2020

WAPC

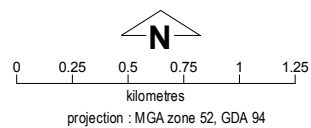


## Wuggubun Layout Plan 1 - Land Tenure

**Draft Version 2**



This Layout Plan does not constitute development approval. It is the responsibility of the developer to ensure that all relevant consents, approvals, licences and clearances are in place prior to commencing physical works on the site. Organisations responsible for such matters may include land owner, local government, incorporated community council, native title representative body, native title prescribed body corporate, Aboriginal Cultural Materials Committee, Environmental Protection Authority, state and federal government departments, and other relevant regulatory authorities. Go to the [PlanWA interactive planning map](#) to view Layout Plans with other spatial layers.



Base information supplied by the Western Australian Land Information Authority SLIP 1096-2018-1. Extraction date of cadastre 10/01/2020. Settlement layout lots are not derived from calculated dimensions. Map document : Wuggubun LP1 DV2 - Land Tenure.mxd Produced by Land Use Planning, Department of Planning, Lands & Heritage, on behalf of the Western Australian Planning Commission. © Western Australian Planning Commission 2020

### Land Tenure

<span style="background-color: #f4a460; border: 1px solid black; display: inline-block; width: 15px; height: 10px;"></span> crown reserve	
<span style="background-color: #c0c0c0; border: 1px solid black; display: inline-block; width: 15px; height: 10px;"></span> crown reserve - Aboriginal Lands Trust	
<span style="background-color: #4CAF50; border: 1px solid black; display: inline-block; width: 15px; height: 10px;"></span> Department of Biodiversity, Conservation & Attractions managed	
<span style="background-color: #f44336; border: 1px solid black; display: inline-block; width: 15px; height: 10px;"></span> freehold	
<span style="background-color: #f08080; border: 1px solid black; display: inline-block; width: 15px; height: 10px;"></span> leasehold	
<span style="background-color: #e0e0e0; border: 1px solid black; display: inline-block; width: 15px; height: 10px;"></span> other	
<span style="background-color: #c8e6c9; border: 1px solid black; display: inline-block; width: 15px; height: 10px;"></span> pastoral lease	
<span style="background-color: #a5d6a7; border: 1px solid black; display: inline-block; width: 15px; height: 10px;"></span> pastoral lease - Aboriginal Lands Trust	
<span style="background-color: #fff9c4; border: 1px solid black; display: inline-block; width: 15px; height: 10px;"></span> unallocated crown land	
<span style="background-color: #bbdefb; border: 1px solid black; display: inline-block; width: 15px; height: 10px;"></span> water reserve	

### Land Administration

<span style="border: 1px solid black; display: inline-block; width: 15px; height: 10px;"></span> cadastre
<span style="border: 1px dashed black; display: inline-block; width: 15px; height: 10px;"></span> lodged cadastre
<span style="border: 1px solid yellow; display: inline-block; width: 15px; height: 10px;"></span> private lease
<span style="border: 1px dashed yellow; display: inline-block; width: 15px; height: 10px;"></span> recommended settlement zone
<span style="border: 1px solid red; display: inline-block; width: 15px; height: 10px;"></span> settlement zone
<span style="border: 1px dashed red; display: inline-block; width: 15px; height: 10px;"></span> settlement layout (SL) lot

<b>Layout Plan 1 endorsement</b>	
Community	Local
<b>RATIFIED DRAFT</b>	
<b>WAPC 17 January 2020</b>	
Amendment endorsement	
WAPC	-