



MEDICAL CENTRE PARKING MARKED = MC 1 TO MC 51
MULTIPLE DWELLING PARKING MARKED = MD 1 TO MD 21
MULTIPLE DWELLING VISITOR PARKING, 4 BAYS RECIPROCAL WITH MC
CAFE PARKING, 4 BAYS RECIPROCAL WITH MC

PROPOSED MEDICAL CENTRE AND ACCOMMODATION
 57,59,61 BANDICOOT DRIVE KUNUNURRA FOR WUNAN.

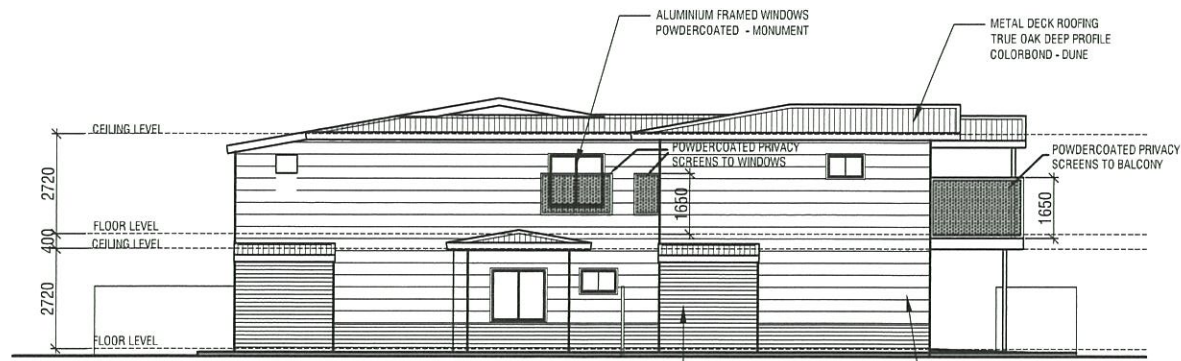
PARKING MANAGEMENT PLAN
 HIGHLIGHTED PEDESTRIAN CAFE ACCESS PLAN

Thermal Comfort Homes Pty Ltd
 56 Eva Street,
 MADDINGTON W.A. 6109
 Telephone 9452 7711
 Email: cafe@tchhomes.com.au

Focus Design Pty Ltd
 CONSULTING ENGINEERS
 10 Hepworth Road, TRIGG 6029
 Tel: 04 03 463 591
 A. T. Van der Meer
 B. E. (Hons) M. Eng. Sc., M. I. E. Aust., C. P. Eng.
 PRINCIPAL ENGINEER

TCH Design Team
 BUILDING DESIGNERS
 56 Eva Street
 Maddington 6109
 telephone 9452 7711

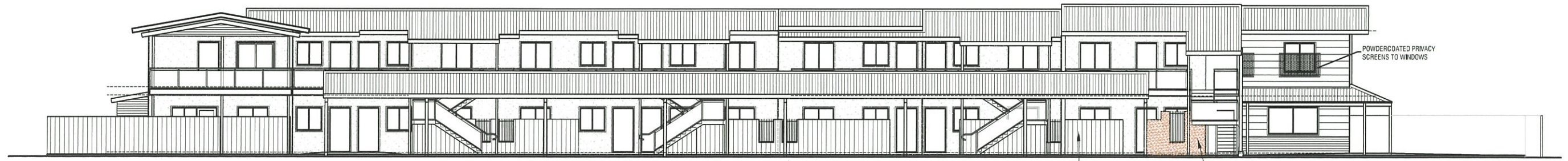
date 26-02-2018
 sheet No. DA1.P
 Job No. TCH 0817



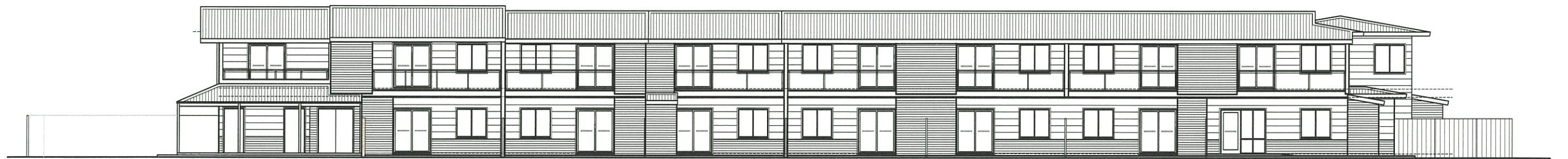
REAR ELEVATION (NORTH WEST)
Scale 1:200 on A3



BANDICOOT DRIVE ELEVATION (SOUTH EAST)
Scale 1:200 on A3



APARTMENT ENTRY ELEVATION (SOUTH WEST)
Scale 1:200 on A3



SIDE ELEVATION (NORTH EAST)
Scale 1:200 on A3

REVISION
A 26-02-2018 PRIVACY SCREENS ADDED
TO REAR OF GROUPED DWELLINGS, WINDOWS
AND BALCONY

<p>PROPOSED MEDICAL CENTRE AND ACCOMMODATION 57,59,61 BANDICOOT DRIVE KUNUNURRA FOR WUNAN.</p>	<p>Thermal Comfort Homes Pty Ltd Reg Builder No 101282 56 Eva Street, MADDINGTON W.A. 6109 Telephone 9452 7711 Email earle@tchomes.com.au</p>	<p>Focus Design Pty Ltd CONSULTING ENGINEERS 10 Hepworth Road, TRIGG 6029 Tel: 04 03 463 591 Date / / A. T. Van der Meer B. E. (Hons) M. Eng. Sc., M. I. E. Aust., C. P. Eng: PRINCIPAL ENGINEER</p>	<p>TCH Design Team BUILDING DESIGNERS 56 Eva Street Maddington 6109 telephone 9452 7711 date 30-10-2017 sheet No. DA5 A Job No. TCH 0817 drawn by; E. Lawrence</p>
<p>MEDICAL CENTRE & ACCOMMODATION ELEVATIONS</p>			