

EAST KIMBERLEY OVERVIEW

Allan Adams – WAPOL

Christy Hawker – Binarri binja yarrowoo (Empowered Communities)

Tracey Gillett – Regional Services Reform Unit (Dept of Communities)

Rochelle Binks – Child Protection (Dept of Communities)

March 2018 Presentation to Shire of Wyndham East
Kimberley Councillors



Poor outcomes, despite significant expenditure

Despite significant expenditure ...



State-wide expenditure

- **\$4.9bn** per annum expenditure on services for Aboriginal people in WA (\$53,000 per person)¹
- Expenditure is **higher in regional WA** – e.g. estimated \$60,000 per person in the Pilbara ²
- Around **60%** of this expenditure is by the State Government



Kimberley expenditure

- Around **\$1bn** per annum expenditure on services for Aboriginal people ³

...outcomes remain poor

State-wide outcomes ⁴

- 6 of 7 Closing the Gap targets **not on track** to be achieved in WA
- The gap in three Closing the Gap targets has widened in WA:
 - **School attendance** (61% Year 10 attendance)
 - **Life expectancy** (65 life expectancy at birth)
 - **Employment rate** (45.6% of 15-64 year olds)

Kimberley outcomes ⁵

- 21% Aboriginal population impacted by **FASD**
- 79% Aboriginal children **welfare dependent**
- **Suicide rates** 6 times the national average
- 53% Aboriginal families below the **poverty line**

¹ Productivity Commission (2014) Indigenous Expenditure Report

² Department of the Premier and Cabinet (2014) Location Based Expenditure Review

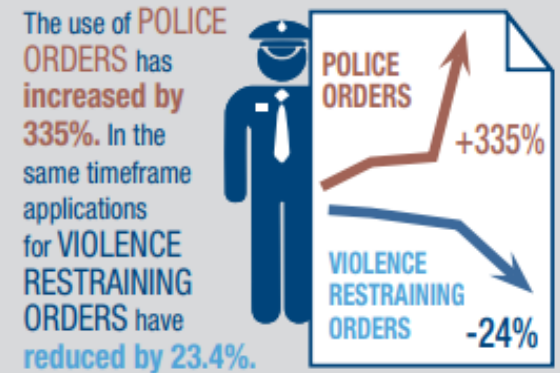
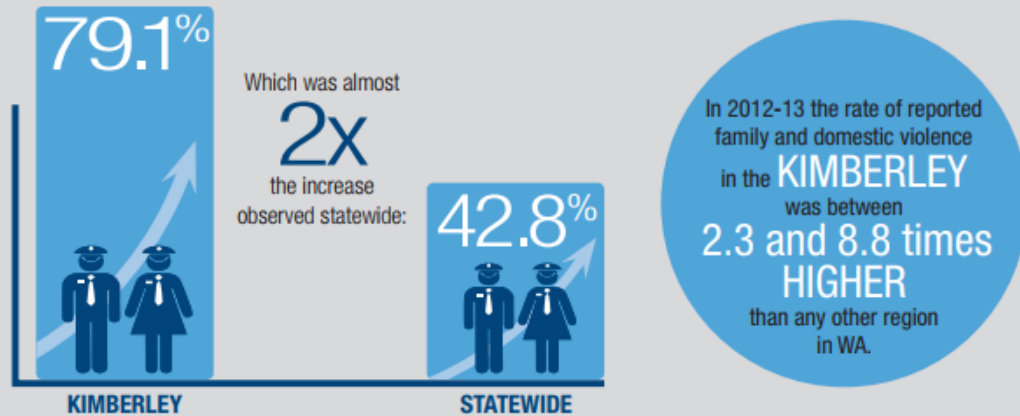
³ Estimated based on the Aboriginal population of the Kimberley and the findings of the Location Based Expenditure Review

⁴ Department of Aboriginal Affairs (2015) Progress against closing the gap, Western Australia

⁵ Kimberley Development Commission (2016) Blueprint

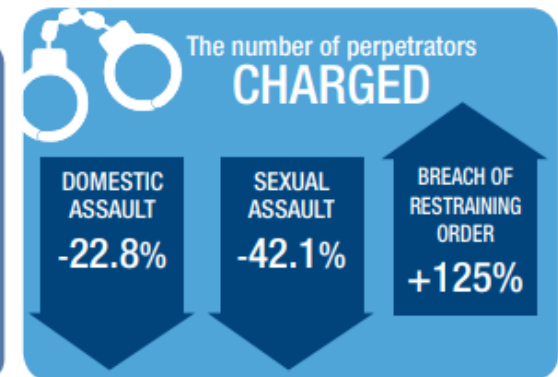
Domestic violence in the Kimberley

Increase in the number of **family violence incidents** attended by WA Police.



The rate of **HOSPITALISATION** for domestic assault in the Kimberley was between **4.2 and 35 times higher** than any other region, per head of population.

The Kimberley region is over-represented in figures for domestic homicide.



Kimberley families and communities

Overwhelming life stress and social disadvantage are recognised risk factors, with a disproportionate number of children in the Kimberley:

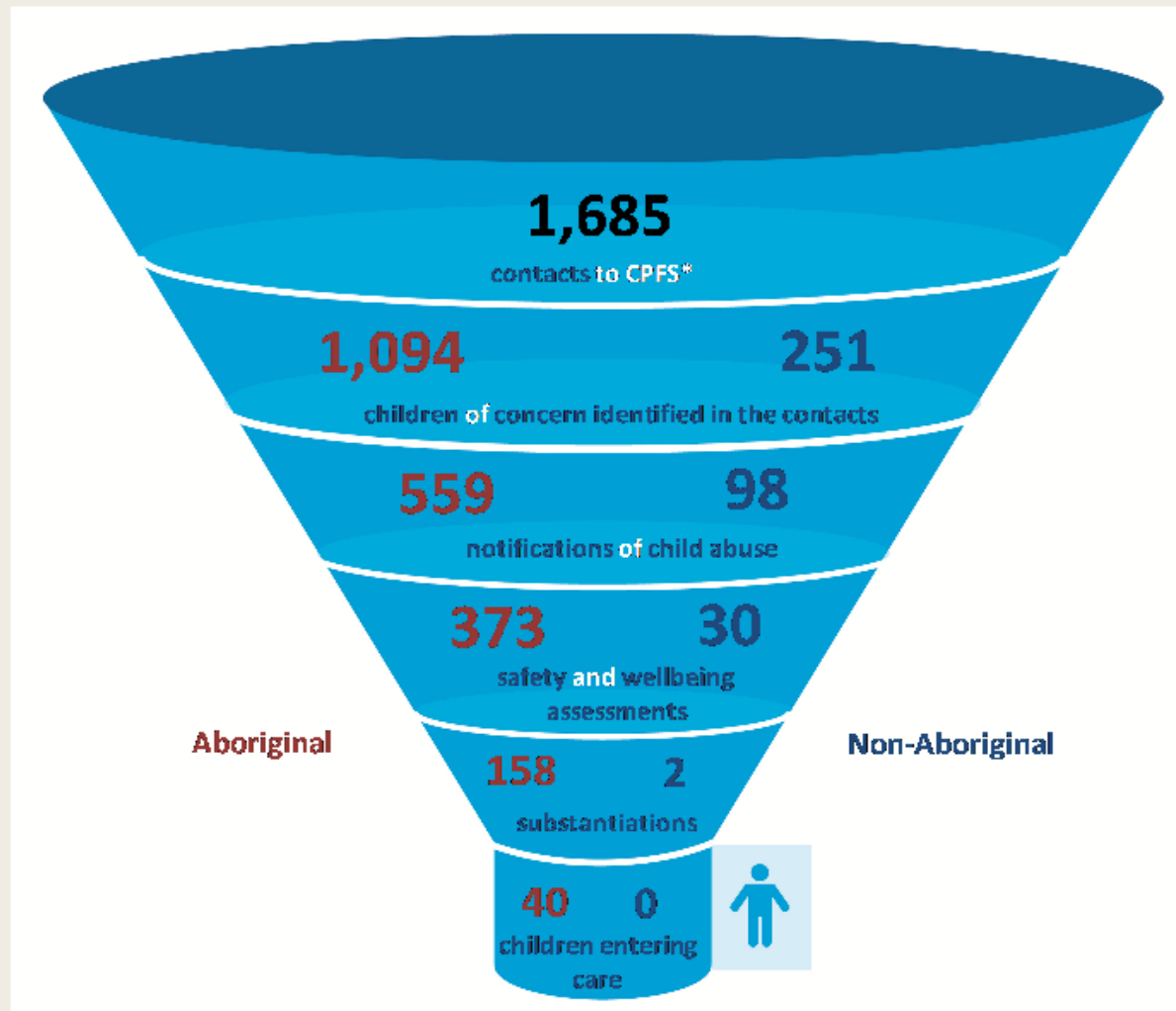
- Exposed to or experiencing high levels of neglect and/or abuse by caregivers
- Exposed to community & family violence from a young age
- Exposed to the adult behaviours caused through alcohol and drug misuse
- Live in poor living/home conditions, including over crowded housing
- Live in environments where there is low social, emotional, & economic capital

Social determinants from a protection lens

All of the following social determinants are connected and developed across a life course:

- Positive family and/or social connection
- Participation in school, training and employment
- Adequate access to health and other services
- Community and cultural capital
- Adequate housing and living conditions

East Kimberley 2016-17



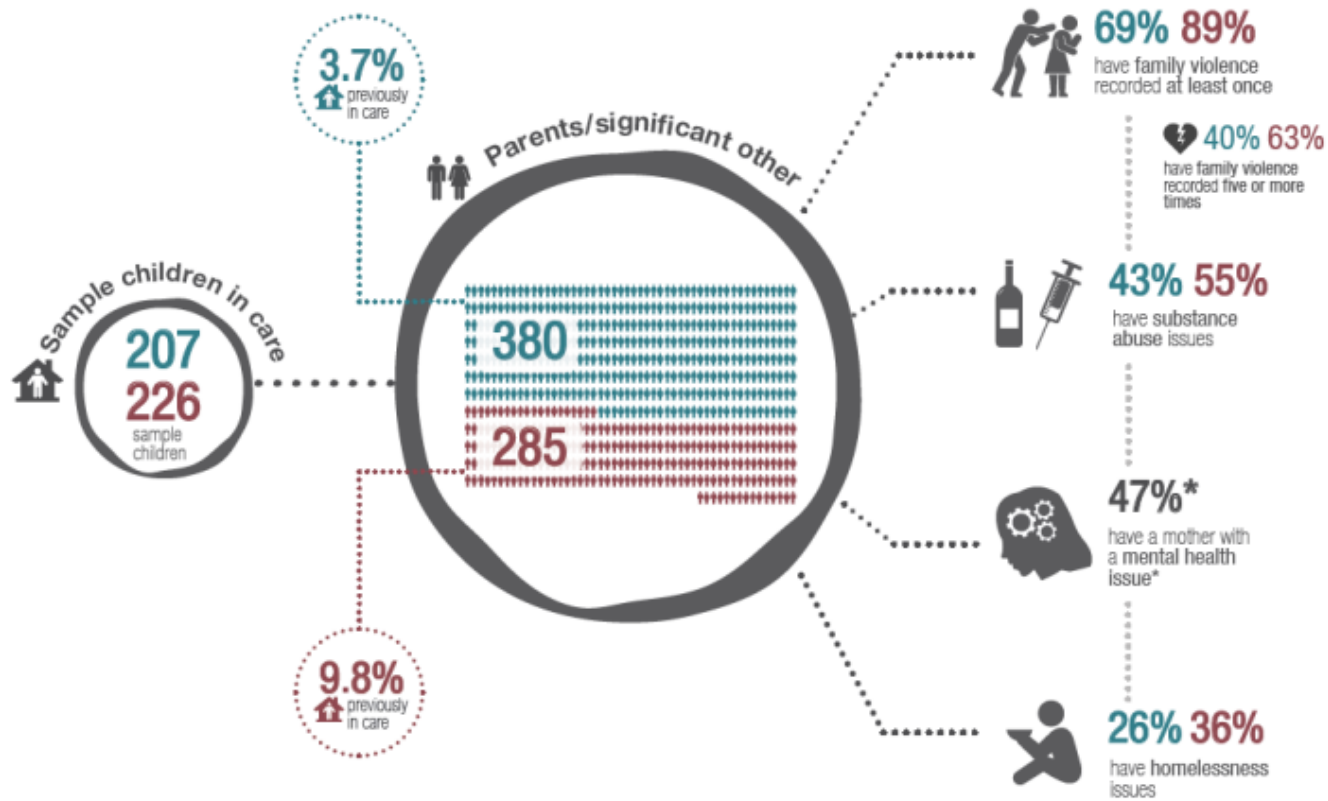
*Contacts to CPFS cannot be grouped by Aboriginality as there are contacts without person recorded.

The Reasons Children come into Care

2017 Analysis - What does demand look like?

Non-Aboriginal/Aboriginal Children & their parents/significant others

Non-Aboriginal Aboriginal



*Data relating to mental health is under reported in interactions recorded on Assist. A study into maternal mental health has been substituted – finding that 47% of children subject to a maltreatment allegation have a mother with a mental health-related hospital admission. O'Donnell, M., Maclean, M. J., Sims, S., Morgan, V., Leonard, H., & Stanley, F. (2015). Maternal mental health and risk of child protection involvement: Mental health diagnoses associated with increased risk. *Journal of Epidemiology and Community Health*, 69(12), 1175-1183.

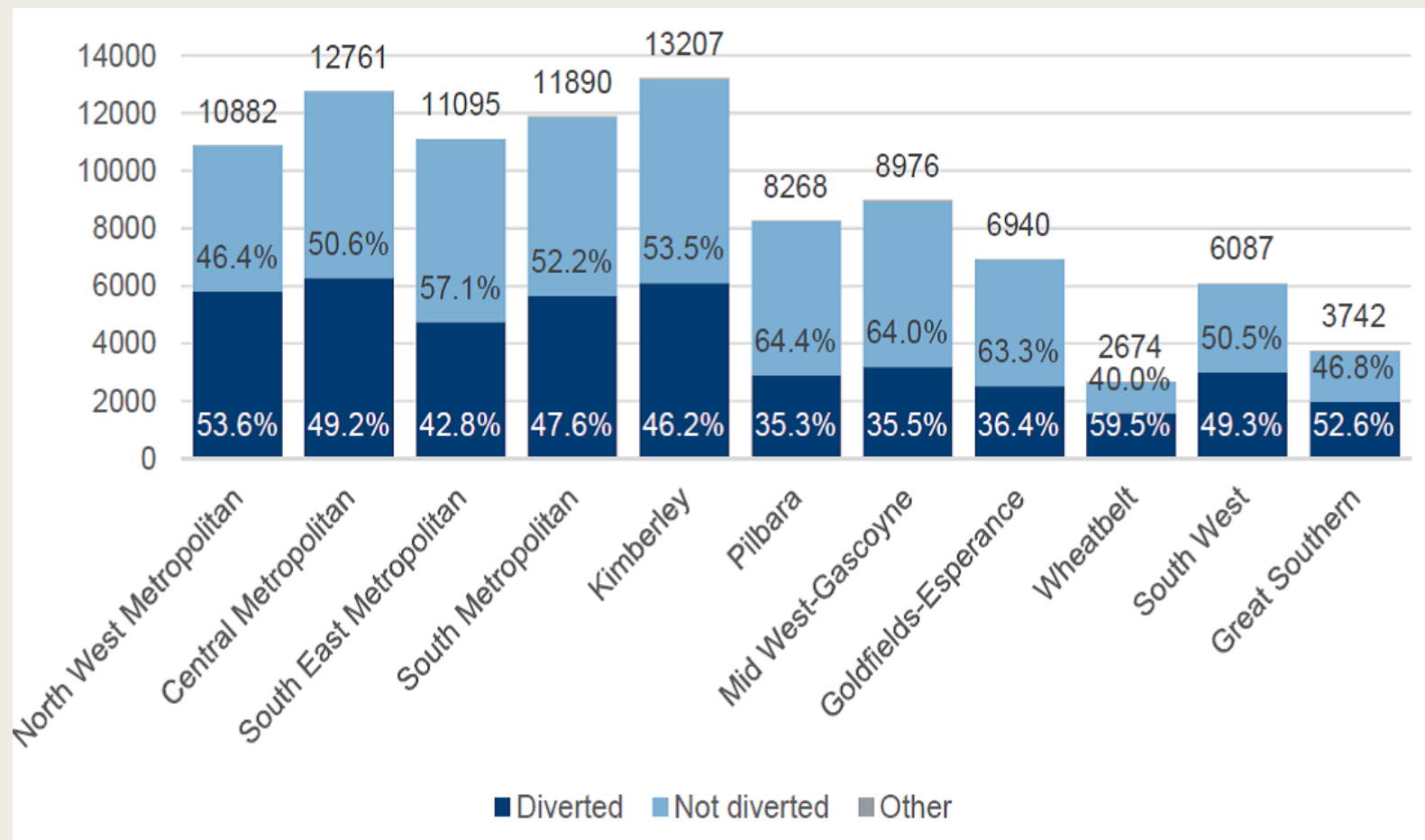
Kimberley crime rates

Key volume crime offences

Offence	2011/12	2012/13	2013/14	2014/15	2015/16	2016/17	2017/18 YTD
Burglary	1077	961	1188	1197	1298	1336	811
% change since Yr1	-	-10.3%	+10.3%	+11.1%	+20.5%	+24.4%	+10.8% on PYTD
Sanction Rates	33.1%	33.4%	37.1%	32.8%	37.1%	37.9%	
Vehicle Theft	264	303	232	248	346	374	222
% change since YR1	-	+14.7%	-12.1%	-6.1%	+31.1%	+41.7%	-10.1% on PYTD
Sanction Rates	41.7%	38.6%	40.9%	36.7%	40.5%	47.6%	
Stealing	1082	1193	1274	1299	1388	1388	773
% change since Yr1	-	+10.3%	+17.7%	+20.1%	+28.3%	+28.3%	-1.3% on PYTD
Sanction Rates	23.9%	26.7%	27.1%	26.5%	27.4%	30.3%	
Damage	1150	1234	1308	1380	1516	1515	807
% change since Yr1	-	+7.3%	+13.7%	+20%	+31.8%	+31.7%	-0.1% on PYTD
Sanction Rates	31.5%	32.8%	32%	32.8%	34.3%	28.2%	

Auditor General data

Juvenile diversion 2012-2016



Shared responsibilities

System/policy/community re-thinking

- Needs large scale coordination by Government and its funded agencies as well as buy in at a broader community/family level
- Needs support by partner orgs to progress the broader agenda – to improve the social & economic outcomes for Aboriginal people
- There are some “quick-ish” wins available –
 - better integrated service response systems, with alternate pathways to detention
 - Greater involvement of family in Court related matters
- Three groups of “At Risk/vulnerable kids”: Neglected, Abused, Offending - some kids fit into all groups
- Response to offenders has largely been led by Police and Youth Justice (investigation; charge; community based orders)
- Requires earlier intervention and place based initiatives

Empowered Communities

Vision

We want for our children the same opportunities and choices other Australians expect for their children. We want them to succeed in mainstream Australia, achieving educational success, prospering in the economy and living long, healthy lives. We want them to retain their distinct languages and identities as peoples and to be recognised as Indigenous Australians.

Fundamental to achieving this vision will be realising the **five social norms** of Empowered Communities in individuals, families and communities.

Children go
to school
and are
ready to
learn

Capable
adults are
in work or
training

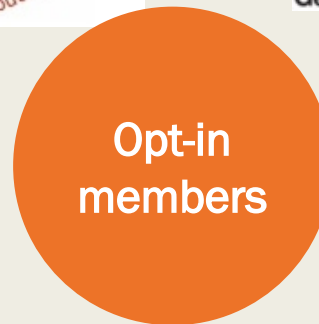
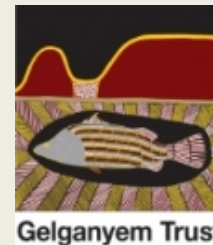
People look
after their
homes and
pay rent

Vulnerable
people,
young and
old are
cared for

No crimes
are
committed

Empowered Communities

Currently **18** Aboriginal-owned organisations from Kununurra and Halls Creek have 'opted in' to be members of BBY



**NGARINGGA
NGURRA
ABORIGINAL
CORPORATION**



District Leadership Groups

District Leadership Groups regional priorities

- *Collectively addressing family violence*
- *Supporting the early years*
- *Targeted support and positive engagement of Kimberley children and young people and families*



Questions

